



CE  
ISO9001

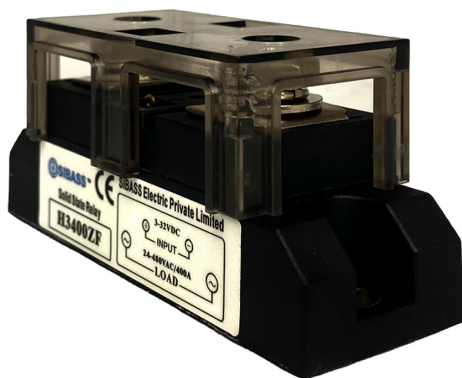


Terminal



Operating temperature

# SOLID STATE RELAY H3-400ZF



## TECHNICAL DETAILS

Rated input control voltage	3-32Vdc
Rated input control current	6-30mA
Pick-up or drop-out time	10ms max
Control type	Zero crossing detection
On-state leakage current	4mA max
On-state voltage drop at I <sub>max</sub>	1.5V
Dielectric strength	2500VAC 50/60Hz for 1 minute
Insulation resistance	500 MΩ min at 500 VDC
Terminals	Screw
Operational temperature	-20 to 75°C
Operational humidity	95% max no condensation



## Dimension

