



LIMIT SWITCH

SE-XCK-M102



CE
ISO9001



machanical life



Degree of protection



TECHNICAL DETAILS

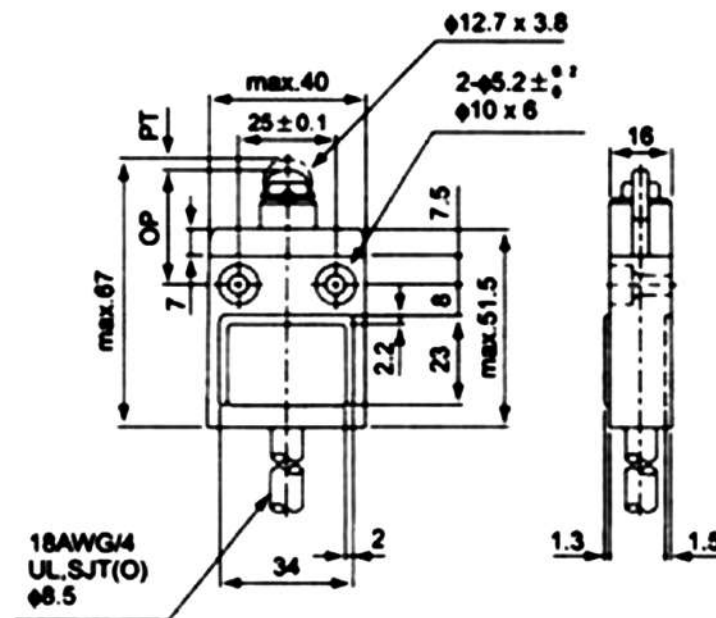
Double break mechanism	INO+INC Force break snap action
Rated voltage / current	10(4)A, 125,250VAC/6(2)A,380VAC for inductance loadt
Contact resistance	25m Ω max. (initial value)
Insulation Resistance	100m Ω min(below 500VDC)
Dielectric Strength	1000VAC, 50/60Hz for 1 minute between terminals of the same polarity
	1500VAC, 50/60 Hz for 1 minute between current-carrging and non-current-carrging metal parts
	50/60 Hz for 1 minute between each terminal and ground
Electrical life	5,00,000 at 10A 250VAC Resistive
Mechanical life	10,00,000 operations min. (under rated conditions)
Operating speed	5mm/s to 0.5m/s
Degree of Protection	IP 65
Ambient temperature raised	Max 30 C over ambient temperature at rated voltage/current
Conform standards	Cenelec EN 50041, EN50047, IEC 337-1, VDE 0660
Operating temperature	-5°C ~ + 65°C (with non icing)
Strong temperature	-5°C ~ + 65°C (with non icing)
Ambient operating humidity	95 % RH Max
Shock resistance	Mechanical durable: 1000m/s ² ,min, Malfunction: 300m/s ² ,min
Vibration frequency	Malfunction: 10 to 55Hz, 1.5mm double amplitude
Terminal screw torsional force	6 - 8 kgf - cm
Other screw torsional force	Cover 4 - 12 kgf - cm/Head 8-9 kgf - cm/Mounting 50-60 kgf/cm
Bare wire diameter	2 Max
Cable diameter	12 Max



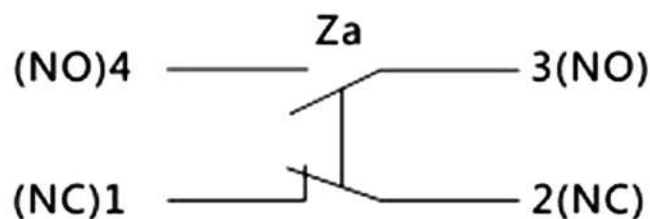
Operating Characteristics

Operating Force	6.86 N
Release Force	1.96 N
Pre-travel	1.8mm
Tripping position	2.0mm
Movement Differential	1.2mm
Over travel	4.0mm
Total travel	5.8mm

DIMENSION



Contact Form



Features

- Economical & plastic type.
- Stainless steel roller, punch and spring.
- Swing amplitude, extra large $\pm 95^\circ$.
- $m20 \times 1.5$ cable gland that can be equipped.