



LIMIT SWITCH

SE-WLCA2-2



CE
ISO9001



mechanical life



Degree of protection



TECHNICAL DETAILS

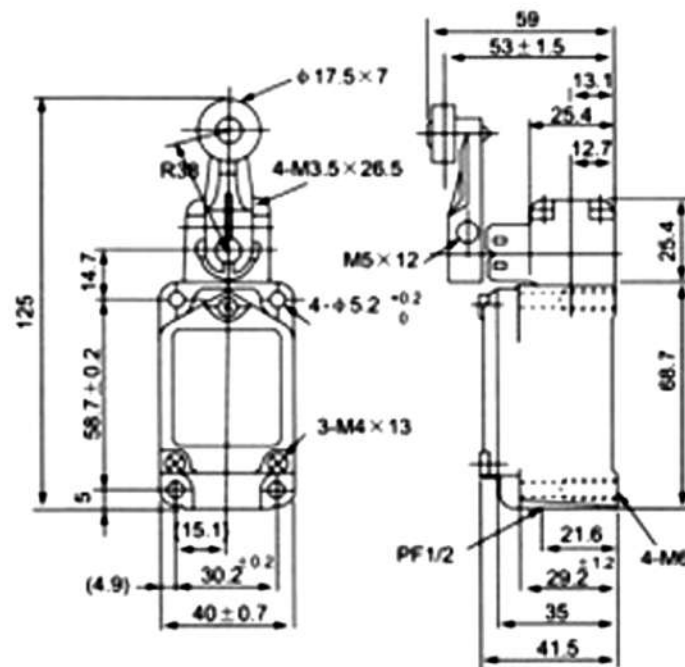
Operating speed	1mm - 2m/s
Operating frequency	Mechanical: 120 operations/minute Electrical: 30 operations /minute
Contact resistance	15 m Ω max. (initial value)
Insulation Resistance	100m Ω min. (at 500VDC)
Dielectric Strength	1000VAC, 50/60 Hz for 1 minute between terminals of the same polarity 1500 VAC, 50/60 Hz for 1 minute between current-carrying and non - current carrying metal parts 1500VAC, 50/60 Hz for 1 minute between each terminal and ground
Vibration	10 - 55 Hz, 1.5mm double amplitude
Shock	Mechanical durobelt 1,000m/Sec ² (about 100G's) Malfunction: 300m/Sec ² (about 30G's)
Ambient Temperature	-10 ~+ 80 c
Humidity	95%
Weight	275g
Degree of Protection	IP66



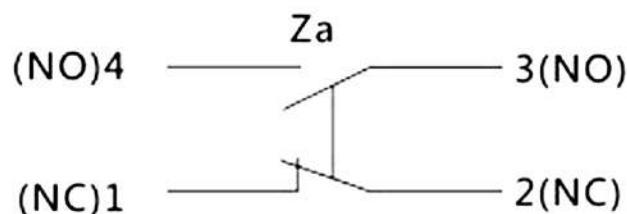
Operating Characteristics

Operating Force	8.83N
Release Force	0.49N
Pre-travel	$25^{\circ} \pm 5^{\circ}$
Over Travel	60°
Movement Differential	16°

DIMENSION



Contact Form



Features

- With strong aluminium cast outer shell .
- High mechanical strength .
- Structure preventing oil, water and pressure .
- Indicating plate with setting position is installed in it, so it is easy to maintain .
- Built - in contract stand has double - spring, so it has long mechanical life .